



Urban Resource Institute 2019 Annual Report



LETTER FROM OUR BOARD CHAIR AND CEO

Dear Friends, Supporters, and Advocates:

Since URI was founded in 1980, hundreds of thousands of adults and children have found safety, transformed their lives and developed resilience in our shelters across New York City, including those impacted by domestic violence, homelessness and developmental disabilities. We are committed to serving these vulnerable populations and to bringing them help and hope.

We can look at 2019 as a particularly momentous year, driving impact in our hometown, across the country and globally. These milestones and achievements include the growth of our innovative People and Animals Living Safely (PALS) program, the opening of new sites, and the launch of new programs.

We are especially proud of some key achievements, including:

- Opening of a new transitional domestic violence shelter, Harmony House.
- The launch of the Early Relationship Abuse Prevention Program (ERAPP) focused on students starting at age 12, an extension of the RAPP program for teens.
- Development of the Economic Empowerment Center, offering services and programming to provide education, training and employment opportunities to individuals impacted by homelessness and domestic violence, funded by a significant grant in late 2018 from the Day One Families Fund.
- A panel discussion convened in New York City with experts on domestic violence, elected officials, and law enforcement leadership fostering conversation on the rise in intimate partner homicides and the collaborative community response, with an emphasis on ongoing efforts to increase resources.
- A presentation and reception event at the World Conference on Women's Shelters in Taiwan on the People and Animals Living Safely (PALS) program, sharing this innovative service model with domestic violence providers from around the world.



- The opening of PALS Place, the first domestic violence shelter in the U.S. with all apartment units intentionally designed for co-living with pets.
- The addition of PALS pet haven parks at two of our domestic violence shelters: the Urban Center for Change and Restoration Residence.

On a slightly more personal note, we are proud that Nat was invited to join the New York City Domestic Violence Task Force and was named to the New York City and State "Nonprofit Power 100" list, reflecting the value and impact of URI among our peer organizations and partners.

As we approach four decades of service, we are proud to be the largest provider of domestic violence shelter services in the U.S., and we continue to work towards a vision of a world free of domestic violence, homelessness, poverty, and trauma, where individuals and communities are safe, stable, and thriving.

Through whatever challenges may confront our city, country and the world, URI will remain steadfast in delivering our mission, built upon the strength of our staff, the resilience of our clients, and the commitment of our donors, supporters and advocates.

Sincerely,

A handwritten signature in black ink, appearing to read "Whittaker Mack III".

Whittaker Mack III,
MBA, CFP®
Chairman, Board of Trustees

A handwritten signature in black ink, appearing to read "Nathaniel Fields".

Nathaniel M. Fields
President &
Chief Executive Officer

INFOGRAPHICS



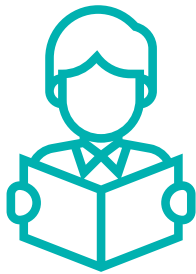
553K

Nights of shelter provided to domestic violence survivors and homeless clients in 2019



7,500

Families served in 2019



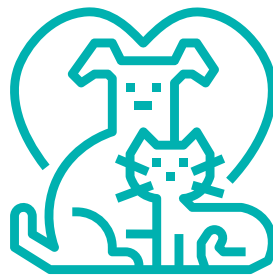
40K

40,000+ public school students educated about healthy relationships



300K

300,000 have found peace, transformed their lives and established resilience at URI since 1980



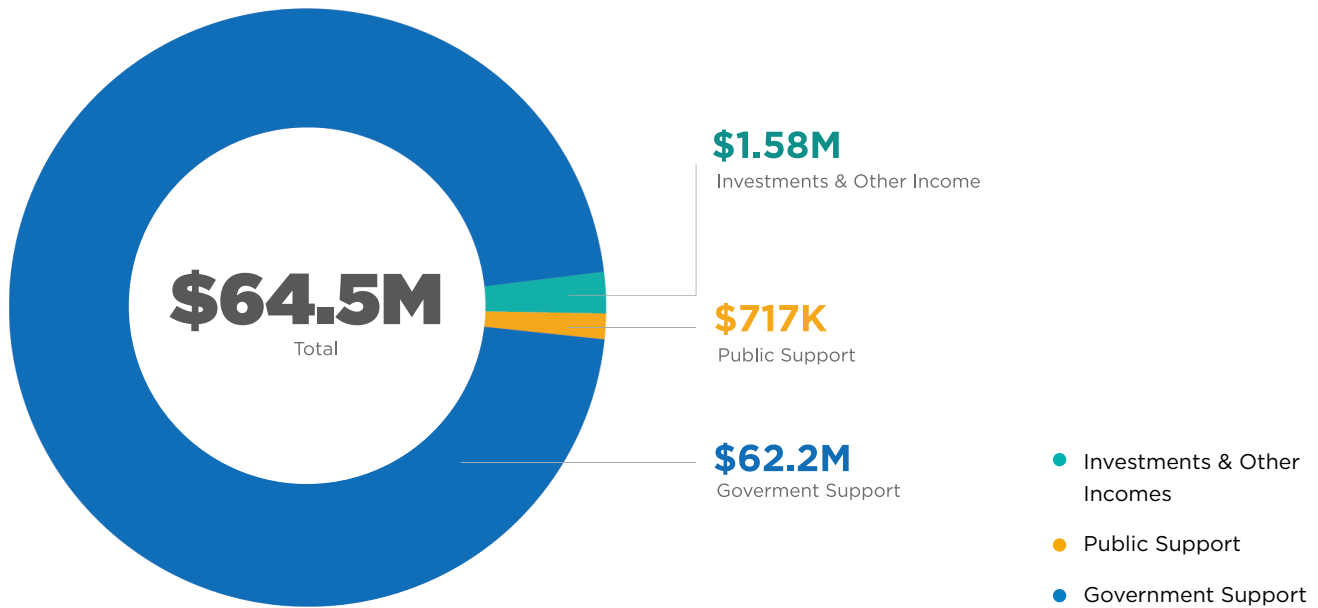
132

Pets called URI home in 2019

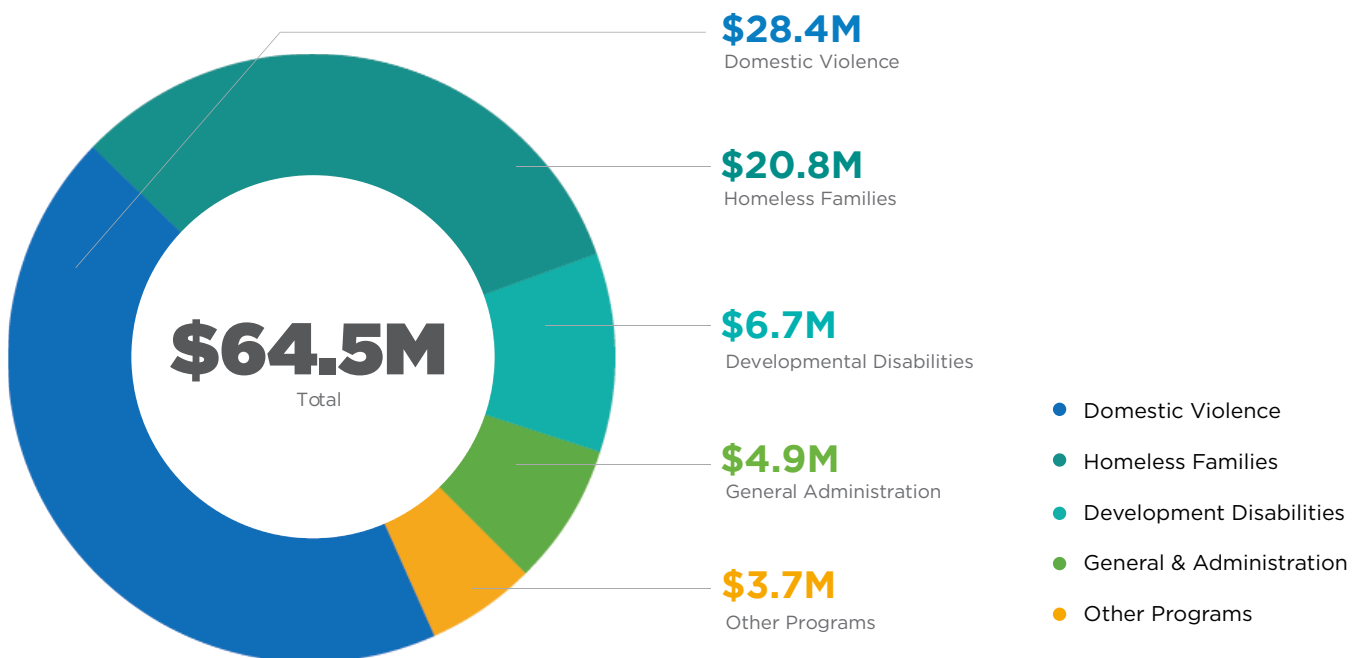
AUDITED FINANCIALS

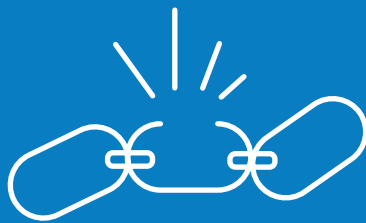
JANUARY 1 - DECEMBER 31, 2019

Revenue & Support



Program Expense





We aim to break the cycle of violence, homelessness, and poverty by fostering independence and hope.

A woman with long dark hair is sitting on a light-colored wooden floor. She is leaning forward with her head buried in her hands, suggesting a state of distress or grief. The background is a blurred interior space with a window and a white chair. The entire image has a teal color overlay.

DOMESTIC VIOLENCE

Urban Resource Institute is the largest provider of domestic violence shelter services in the U.S. We are committed to supporting those affected by domestic violence and driving sustainable, positive change, as we have for 40 years.



SUPPORTING SURVIVORS OF DOMESTIC VIOLENCE

Urban Resource Institute is the largest provider of domestic violence shelter services in the U.S. Beyond offering safety and shelter, we are committed to supporting those affected by domestic violence - adults and children - with holistic and innovative programs that drive sustainable, positive change and help break the cycle of violence.

We offer shelter, support, information, and expertise so that each client can choose their own path to heal and rebuild their lives. In 2019 we:

- Provided safe apartment style housing to 3,014 victims of domestic violence, including adults and children, at our 12 shelters. Among these were 87 families with a total of 120 pets in our PALS (People and Animals Living Safely) program.
- Supported thousands of clients free legal representation, information, and consultation to domestic violence victims on family law matters.

[READ MORE](#)

HOMELESS FAMILIES

Urban Resource Institute's dedicated team provides client-centered services to help families experiencing homelessness recuperate and attain stability.



PROVIDING SAFETY AND SHELTER TO HOMELESS FAMILIES

Urban Resource Institute's dedicated team provides client-centered services to help families experiencing homelessness recuperate and attain stability.

Homelessness in New York City, specifically, has reached record highs, with over 60,000 people living in shelters on any given night and 75% of the shelter population is families with children with no place to call home.

We offer safe and secure temporary and transitional housing and support services. In 2019 we:

- Operated nine homeless family shelters with the capacity to shelter over 1,000 individuals on any given night.
- Provided safety and shelter to a total of 2,249 adults and children.

[READ MORE](#)

ADULTS WITH DEVELOPMENTAL DISABILITIES

Many developmentally disabled New Yorkers have aged-out out of special education and need and deserve resources and support to live happy, safe, and productive lives.



ACTING AS A BEACON OF HOPE FOR ADULTS WITH DEVELOPMENTAL DISABILITIES

Many developmentally disabled New Yorkers have aged-out of special education and need and deserve resources and support to live happy, safe, and productive lives.

URI offers two types of client-centered services, both with individualized attention from an interdisciplinary team:

- Intermediate care facilities with full service, around the clock care in home-like independent settings
- Individualized residential alternative that offers the opportunity for independent living and a wide range of activities

[READ MORE](#)

ECONOMIC EMPOWERMENT

At Urban Resource Institute, economic empowerment is an integral part of providing holistic care to our clients. In 98% of domestic violence cases, financial abuse occurs and is often the main reason survivors stay or return to abusive partners.



EMPOWERING SURVIVORS TO ACHIEVE ECONOMIC INDEPENDENCE

At Urban Resource Institute, economic empowerment is an integral part of providing holistic care to our clients to help create a sustainable future. Financial abuse occurs in 98% of domestic violence cases, and finances are often the main reason survivors stay with or return to abusive partners. URI works with clients to develop an individualized plan to establish self-sufficiency and economic empowerment.

While the program is still in its infancy, Urban Resource Institute is currently growing its service menu to support individuals across all program areas to help survivors achieve economic resilience.

[READ MORE](#)

2020 COVID-19 SPECIAL UPDATE

URI SERVES NEW YORK CITY THROUGH THE PANDEMIC



In early 2020, the world grappled with unprecedented changes to their daily lives as the transmission of the novel coronavirus (COVID-19) began to spike and mandatory lockdowns and stay home orders began to be enacted.

While much of New York City remained safely at home, and remote work became standard practice, domestic violence and homeless shelters became the frontlines and staff became essential workers. Urban Resource Institute shelters continued to serve clients 24 hours a day, seven days a week, delivering uninterrupted care to those impacted by homelessness and domestic violence.

The Urban Resource Institute's leadership team vigilantly monitored the ever evolving pandemic situation and guidelines, and took all necessary steps to keep clients, staff and facilities safe while operating at full capacity.

Adding complexity was the impact of lockdown and isolation on the incidence of domestic violence, and the impact of the growing economic crisis on driving homelessness. With stay at home orders and the shutdown of many businesses in New York City going into effect in March 2020, COVID-19 exacerbated the already difficult situations of those facing domestic violence. Being in lockdown with the abuser, along with financial stresses, increased the likelihood of abuse, and victims may have been unable to reach out for help while living with the perpetrator. For both the homeless and victims of domestic violence, fear of exposure to COVID-19 often prevented them from seeking shelter

In response, Urban Resource Institute worked tirelessly to raise awareness of the availability and safety of shelter and services. "Safety Planning During COVID" was featured on the website landing page, extensive social media was implemented, and a dozen media interviews helped spread the message.

In addition to managing the impact of COVID-19 on URI shelters, staff and clients, URI leaders, including President and CEO Nathaniel Fields, contributed to the city and state response to COVID-19 through service on the Board of the Human Services Council; Health & Human Services Nonprofits and Social Services Advisory Council on "reopening" New York City; the special COVID-19 domestic violence task force of the New York State Council on Women and Girls; the COVID-19 Response Work Group of the New York City Office to End Domestic and Gender-Based Violence (ENDGBV); the Fatality Review Committee of the New York State Office for the Prevention of Domestic Violence; and the New York City Mayor's Nonprofits and Social Services Advisory Council.

BOARD OF TRUSTEES

Whittaker Mack III, MBA, CFP®

Chairman, Board of Trustees
Vice President at JP Morgan
Securities LLC

Vivian Y. Bright

Business Administrator,
Berean Baptist Church

Nina Esaki, PhD, MSW, MBA

Assistant Professor, Springfield
College School of Social Work

Charles F. Gergel

Secretary, Attorney & Partner,
Cullen and Dykman

Corinna C. Grant

Associate Director,
Volunteer Services, King's County
Hospital Center

Osy Harrison

East Coast Director, Community
Outreach, Mission Be

Susan Hirshman

Financial Advisor, Morgan Stanley

Alan Kolod

Chairman, Moses & Singer, LLP

Esther Lainis

Senior Vice President, Commercial
Banking, Capital One

Adrienne Y. Peterson, MBA, CPA

Treasurer, Board of Trustees,
IT Audit Manager, HSBC Bank

Kenneth Pollack, CPA

Retired Chief Financial Officer,
Eileen Fisher, Inc.

Lisa A. Ross, MD, MBA

Vice Chair, Board of Trustees,
Director, Anesthesiology,
Harlem Hospital

Carmen J. Smith, MPA

Vice President, Creative
Development and Inclusive
Strategies, Walt Disney Imagineering
and Parks and Resorts

Roy Williams

VP of Global Technology
Infrastructure JP Morgan Chase

Reina Yasuoka

Program & Business Manager,
Global Strategic Partnerships, IBM

THANK YOU TO OUR GENEROUS DONORS

Individual Supporters

Fabio Adduci
Alvin Adell
Lisa Aguilera del Puerto
Thomas Allegretti
Phyllis Arnold
Cari Bonilla
Sid and Esther Borenstein
Tracy Brickner
Vivian Y. Bright
Elizabeth Brody
Jacqueline and Larry Buford
David and Mary Ann Butler
Kurt Carrington
Charles and Jacqueline Carroll
Shi Chan
Gregory Chaskin
Matthew Cody
Donna Corrado
Janice Cosentino
Doug and Sandra Davidson
Lily Dobberteen
Aileen Dresner
Lucas Eggers
Anthony Ellis
Nina Y. Esaki
Onome Kelly Eyubeh
Nathaniel and Kimberly Fields
Jill Fiengo
Michael and Rachel Fishbein
Anthony Fletcher
Rita Garza
Charles Gergel
Michael Gordon
Corrina C. Grant
Caitlin Harper
Kevin and Osy Harrison
Brandon Helfand
Susan Hirshman
Claire Isno
Giuseppe Iuso
Tania Jospitre
Robin Keller
Alan and Susan Kolod
Anuradha Kowolik
Esther Lainis
Jennifer Lee
Anne and Sheina Levin
Eric and Mark Lewis
Andrea Lombardi
Im Lynde
Whittaker Mack III
Scott Mason
Valerie Mason-Cunningham
Luis Matos
Melvin and Jan Mccray
Rhonda J. McLean
Jerry Migdol
Guy Mitchell
Donovan Mitchell
Marie Moody
Colleen Mullen
Jim Mulroy
Donovan Murray
Tamar Novetsky
Shaun, Scott, Mason, and David
Pavloksy
Adrienne Y. Peterson
James Pirot
Kenneth and Grace Pollak
Rafail Portnoy
Diane Read
Natalie Richardson
Beverly Riddick
David and Dianne Rogers
Lisa A. Ross
Tejpal Sandhu
Victoria Schneider
Breanna Schultz
Perry Silver
Carla Smith
Carmen J. Smith
Lauren Sunshine
Patricia Titus
Steven and Karol Todrys
Edolphus Towns
Vincent Toye
Isaac VanDuyn
Kay Wahrsager
Elana Waldstein
Susan Warren
Joel Werberger
Ginger Wey
Jennifer White-Reid
Roy Williams
Eric Wong
Reina Yasuoka
Elaine Yu

THANK YOU TO OUR GENEROUS DONORS

Institutional Supporters

Anonymous	Heights Advisors	Norma Green Foundation
A Kinder World Foundation	Heritage Pension Advisors	PetSmart Charities
A1 Equities	Horne Family Foundation	QuickConnect
ABBA Realty	Interior Resources	Sanctuary Institute
Ambassador Food Services Corp.	J14 LLC	SAT Tech Antenna Systems
American Kennel Club Humane Fund	JAI/City View	SBP Management/Metro Inn
Americon HITT	Jill E. Cuthbertson Revocable Trust	Soroptimist International of New York City
Amy Larovere Consulting LLC	Kleanix Facility Services	TD Charitable Foundation
Banfield Foundation	Laura Frank Family Foundation	TemPositions
Bruce G. Geary Foundation	Lewis of Woodhaven/ Bert Drobbin Co	The Beacon Group/ Lehrer Foundation
Capital One Bank	Marsh & McLennan Agency, LLC	The Meredith Family Foundation
Churchgate Protective Services	MC Delta Roofing and Construction	The Migdol Foundation
City of New York Office of the Comptroller	McSilver Institute for Poverty and Research	The Omer Foundation
Colliers International NY LLC	Meeker Sharkey & Hurley	The Wright Group
Cullen and Dykman, LLP	Modern Rebel & Company	Uber
Day 1 Families Fund	Mutual of America Life Insurance Company	Well Beings
Elmo Realty, Inc.	Nestle Purina PetCare Company	Wells Fargo
Emy and Emil Herzfeld Foundation		WithumSmith and Brown, PC
Estate of Margaret Whitton		
Franklin Philanthropic Foundation		
Fusion Networks		

Public Funders

New York City Department of Health and Mental Hygiene	New York State Dep.t of Children and Family Services
New York City Department of Homeless Services	New York State SED - Access VR
New York State Office for People with Development Disabilities	USDA - SNAP
New York State Department of Social Service	US Dept of Housing and Urban Development
New York State Dept. of Justice - Victim Services	



URINYC[®]

Urban Resource Institute

Visit us at urinyc.org